

ULTRAAQUA.COM

**NEW ÖNORM VALIDATION  
2018**

THE WORLD'S MOST EFFICIENT UV FOR DRINKING WATER



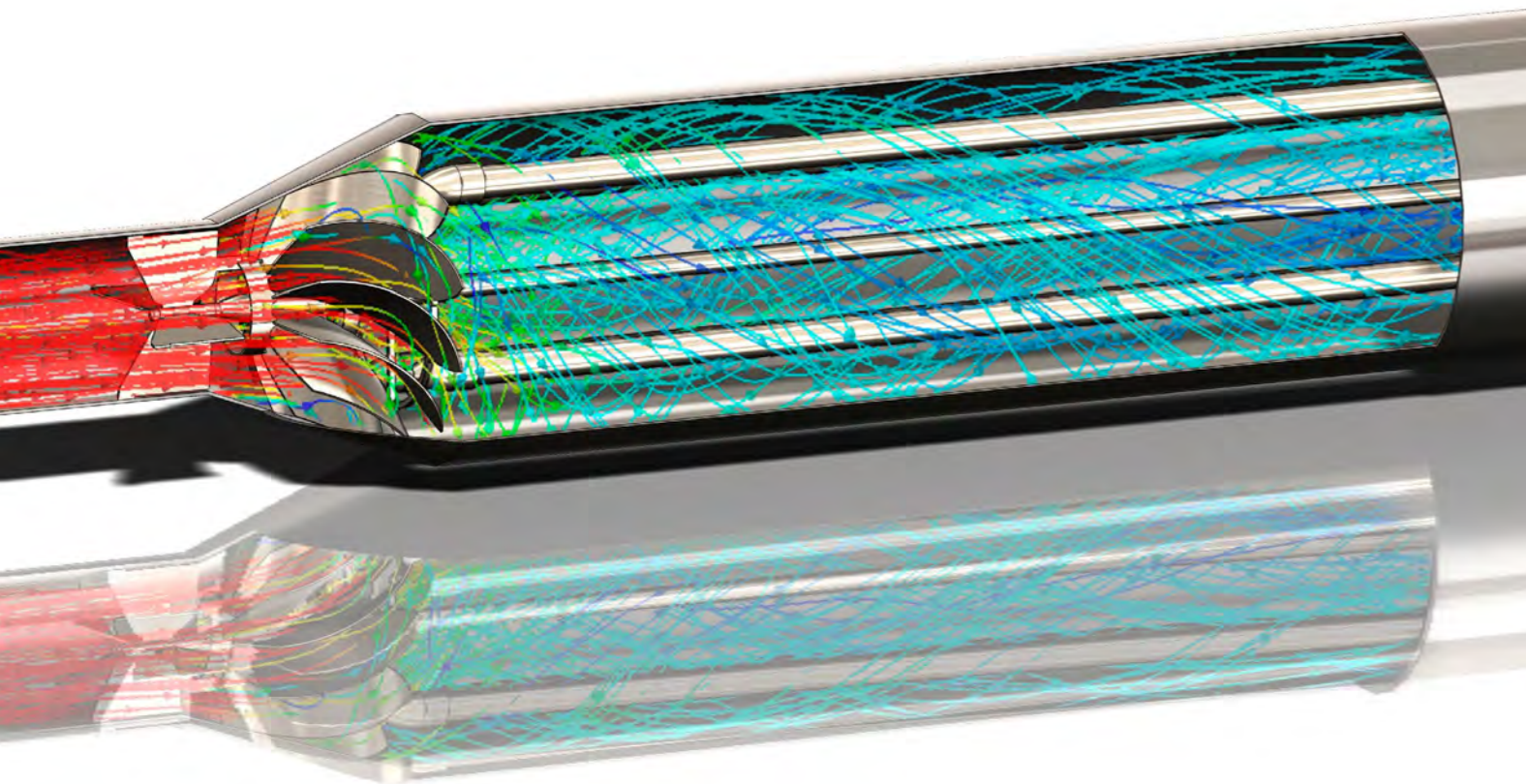
UV SYSTEMS FOR  
DRINKING WATER

SAFE & RELIABLE  
DISINFECTION

**ULTRAQUA**  
UV DISINFECTION SYSTEMS

# HIGHEST ENERGY EFFICIENCY EVER ACHIEVED

Patented ULTRAAQUA SwirlFlow™ technology

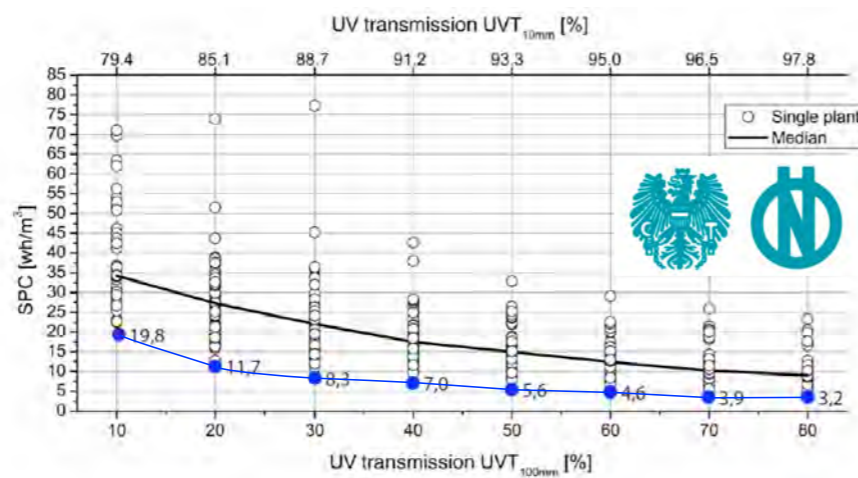


## PROVEN PERFORMANCE

The new ÖNORM 2018 test results from 'Power efficiencies of UV disinfection plants' are shown on the table.

The results clearly prove that the ULTRAAQUA's newly validated SSV unit beats all the other UV systems in power efficiency. This outcome was achieved due to ULTRAAQUA's patented SwirlFlow™ technology.

By using SwirlFlow™ technology it was possible to optimize the complete SSV UV series for a wide range of UVT applications from 70% to 98% instead of only one UVT application.



● = ULTRAAQUA MR4-220SSV - Lower is better  
 SPC = Specific Power Consumption - Lower is better

A. W. Schmalweiser | Power efficiency of UV disinfection plants - 2017



Installed MR3-220SSV in Porvoo Finland

## PATENTED SWIRLFLOW™ TECHNOLOGY

The swirl flow technology is a revolutionary method to ensure optimal and equal UV exposure of all pathogens passing through the chamber. The unique concept combined with an extensively optimized design provides hydraulic efficiencies around 90% at all water qualities in the operation range.

**“Fluidquip Australia has represented ULTRAAQUA UV systems for around two years now. We believe the newly validated SSV UV series to be an attractive product for the Australian UV market”**

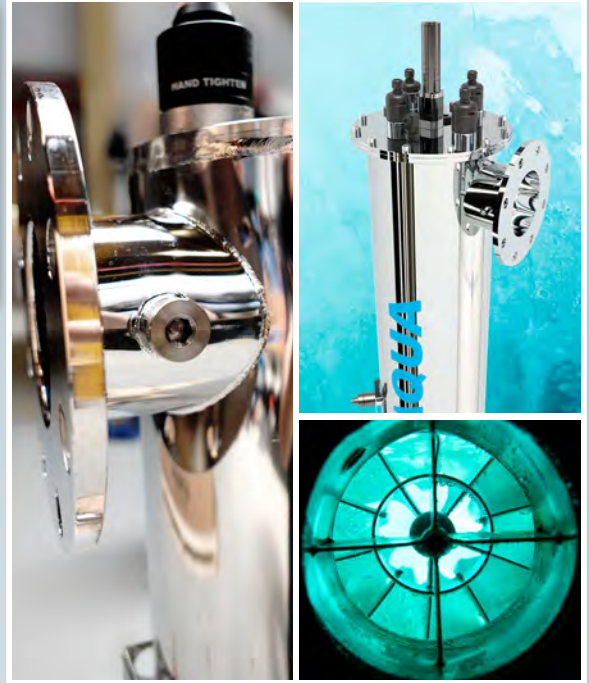
Fluidquip - Australia

# MODEL OVERVIEW

Validated Flow / UVT	75% UVT	80% UVT	85% UVT	90% UVT	96% UVT
MR1-220SSV	9m <sup>3</sup> /h	14m <sup>3</sup> /h	17m <sup>3</sup> /h	22m <sup>3</sup> /h	40m <sup>3</sup> /h
MR3-220SSV	17m <sup>3</sup> /h	24m <sup>3</sup> /h	36m <sup>3</sup> /h	56m <sup>3</sup> /h	112m <sup>3</sup> /h
MR4-220SSV	33m <sup>3</sup> /h	51m <sup>3</sup> /h	81m <sup>3</sup> /h	127m <sup>3</sup> /h	230m <sup>3</sup> /h
MR6-220SSV	50m <sup>3</sup> /h	77m <sup>3</sup> /h	130m <sup>3</sup> /h	193m <sup>3</sup> /h	355m <sup>3</sup> /h
MR6-350SSV	75m <sup>3</sup> /h	119m <sup>3</sup> /h	201m <sup>3</sup> /h	316m <sup>3</sup> /h	590m <sup>3</sup> /h
MR8-350SSV	105m <sup>3</sup> /h	163m <sup>3</sup> /h	267m <sup>3</sup> /h	426m <sup>3</sup> /h	800m <sup>3</sup> /h
MR12-350SSV	158m <sup>3</sup> /h	245m <sup>3</sup> /h	401m <sup>3</sup> /h	658m <sup>3</sup> /h	1280m <sup>3</sup> /h
MR16-350SSV	210m <sup>3</sup> /h	327m <sup>3</sup> /h	588m <sup>3</sup> /h	919m <sup>3</sup> /h	1830m <sup>3</sup> /h

ÖNORM validated units	Total System Watt	Max validated flow	*SPC at max validated flowflow	Connection Flanges
MR1-220SSV	240w	51m <sup>3</sup> /h	4,7Wh/m <sup>3</sup>	DN100
MR3-220SSV	685w	146m <sup>3</sup> /h	4,7Wh/m <sup>3</sup>	DN100
MR4-220SSV	925w	230m <sup>3</sup> /h	3,9Wh/m <sup>3</sup>	DN150
MR6-220SSV	1390w	355m <sup>3</sup> /h	3,9Wh/m <sup>3</sup>	DN250
MR6-350SSV	2210w	590m <sup>3</sup> /h	3,7Wh/m <sup>3</sup>	DN300
MR8-350SSV	2940w	800m <sup>3</sup> /h	3,7Wh/m <sup>3</sup>	DN350
MR12-350SSV	4410w	1280m <sup>3</sup> /h	3,4Wh/m <sup>3</sup>	DN450
MR16-350SSV	5880w	1830m <sup>3</sup> /h	3,2Wh/m <sup>3</sup>	DN500

\*SPC = Specific Power Consumption - **Lower is better**



# BETTER THAN THE COMPETITION

### Robust automatic wiper system

Reduces the downtime and keeps the UV running optimal.

### Lamps and quartz sleeves

Easy service no tools required.

### Low headloss design

Minimizes the need for additional pumping.

### 16.000h lamp lifetime

Guaranteed lifetime with full payback reduction.



### ÖNORM validated

Most energy efficient systems ever tested at ÖNORM (May-2018).

### Full bioassay validation

Better quality control and reliability.

### Easy integration to SCADA

Connection via ethernet MODBUS.

### ULTRAAQUA product warranty

Two years from purchase.